

Instructions

Flextight Damaged Original Kit

©1999 Imacon ApS. All rights reserved.

Flextight Damaged Original Kit Instructions

The information in this manual is furnished for informational use only, is subject to change without notice, and should not be construed as a commitment by Imacon ApS. Imacon ApS. assumes no responsibility or liability for any errors or inaccuracies that may appear in this manual.

Imacon ApS. assumes no responsibility or liability for loss or damage incurred during or as a result of using Imacon software or products.

Imacon, ColorFlex and Flextight are trademarks of Imacon ApS. Adobe and Adobe Photoshop are trademarks of Adobe Systems, Inc. Macintosh, Mac OS and ColorSync are registered trademarks of Apple Computer, Inc.

Printed in Denmark.

Table of Contents

Introduction	5
Kit Contents	6
Included Materials	6
Additional Materials Required	7
Using the Kit	8
Preparing a Damaged Original for Scanning	8
Cleaning the Original	9

Introduction

The Flextight Damaged Original Kit will help you get better results when scanning scratched or otherwise damaged transparencies with your Imacon Flextight scanner.

Normally, a primary advantage of Flextight is that it does not require any tape or gel when scanning transparencies. This saves you the time otherwise required to prepare and clean your originals and is also a result of the fact that no glass exists to interfere between your original and the scanner's CCD sensor. However, when working with damaged or scratched originals, the extreme sharpness of the Flextight scanner means that all of the damage to your original is accurately reproduced in your scan, thereby requiring you to retouch the original later.

When scanning a damaged original, scanning gel can actually work to benefit your scan. The gel fills the scratches of your original and acts to blur each scratch so that it takes on the color of the surrounding film, thereby making the scratches much less visible.

The Flextight Damaged Original Kit makes it possible for you to use mounting gel when scanning with Flextight. Because scans are most typically made from new or well-preserved originals, most people will only need to use the kit occasionally.

Kit Contents

Included Materials

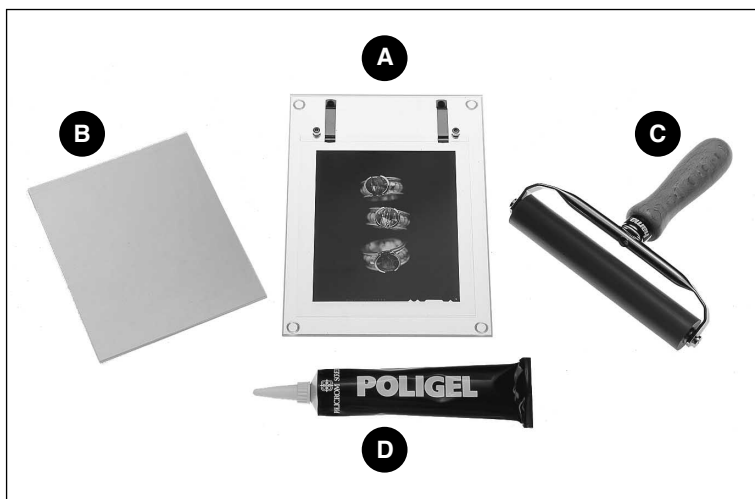


Figure 1: The contents of the Flextight Damaged Original Kit.

- A Mounting Plate:** Includes a clasp for holding the mounting foils and marks for applying gel and positioning the original (shown with an original mounted).
- B Mounting Foils:** Two-layer holders in which you will apply gel and insert an original.
- C Roller:** Helps you to spread the gel evenly over the originals after applying gel and closing the foil.
- D Tube of Gel:** Apply this gel to hide scratches and abrasions in a damaged original (shown with the applicator tip attached).

Additional Materials Required

The gel included with the kit is exactly like the gel used with traditional drum scanners. Because of the laws governing the shipping of volatile liquids, this kit does not include equipment for cleaning your originals after scanning. Therefore, you must obtain the following items from your local pre-press supplier before using the Damaged Originals Kit:

- **Cleaning Fluid:** This should simply be the standard cleaning fluid used for cleaning originals after drum scanning with gel. The manufacturer of the gel included with the cleaning kit, Policrom Screens, markets such fluid as Policrom LMS 52E and L52E.
- **Cleaning Tray with Air-Tight Lid:** Your cleaning tray must be large enough to hold your original plus a reasonable amount of cleaning fluid. It must be approved for use with toxic, petroleum-based solvents. It must also include an air-tight lid so that you agitate the original during cleaning and store the tray and liquid without allowing the liquid evaporate.

For more information about cleaning your originals, contact your local pre-press supplier.

Using the Kit

Preparing a Damaged Original for Scanning

To prepare a damaged original for scanning, use the procedure below and refer to Figure 1.

1. Position the mounting plate on your desk with the clasp at the top.
2. Place a foil with the sealed side under the clasp so that you can open the foil from the bottom. The top of the foil must lie straight along the top of the clasp.
3. Open the foil.
4. If you have not already done so, break the seal on the gel tube and/or attach the applicator.
5. As shown in Figure 2, the mounting plate is marked to indicate where the various formats of originals should be placed. Apply gel in a "T" shape within the marks of the format you are going to use. Apply light pressure on the tube and lay a single sweep in each direction.

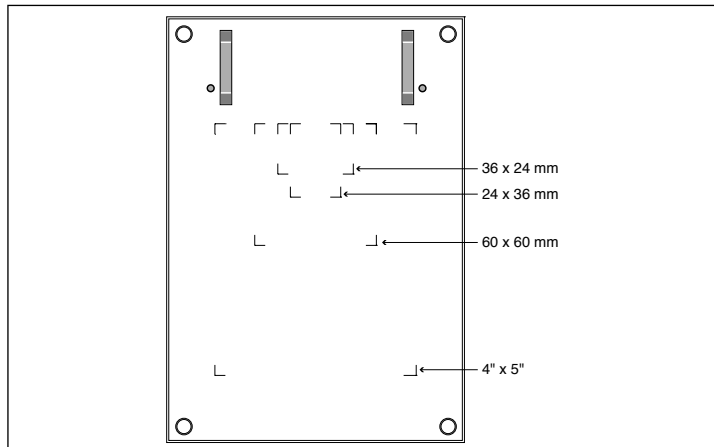


Figure 2: Format markings on the mounting plate

6. Position the original on the marks on the mounting plate.
7. Apply another "T" of gel on top of the original.
8. Close the foil.
9. Get the roller and place it at the top of the foil. Gently apply pressure and roll from top to bottom to get an even distribution of gel on the original.
10. Remove the foil from the mounting plate without opening the foil and mount it as usual in a Flextight original holder.
11. Be sure to keep the gel tube sealed by replacing the applicator cap. To store the gel for a longer period of time, remove the applicator and replace the tube cap.

Cleaning the Original

1. Remove the foil from the Flextight original holder.
2. Remove the original from the foil and discard the foil. (Refill kits that include more foils and gel are available from Imacon.)
3. If necessary, pour some cleaner into your cleaning tray (see "Additional Materials Required" on page 7 for more information about these items).
4. Place the original in the tray.
5. Place the lid tightly on the tray.
6. Gently rock the tray back and forth for one or two minutes.
7. Open the tray, remove the original and seal the tray again.
8. Put the original on a lint-free cloth and gently wipe it clean of excess solvent.

